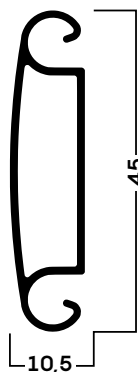


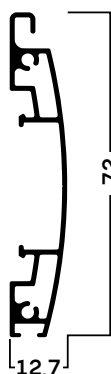
PROFILI ALLUMINIO ALUMINIUM PROFILES



**FASCIA
ATTACCO RULLO**
310g/ml
cod. 01



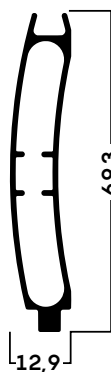
**FASCIA
ATTACCO STANDARD**
400g/ml
cod. 02



TERMINALE
600g/ml
cod. 03



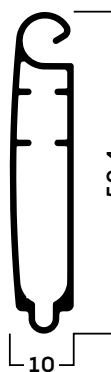
**CARTER
TERMINALE**
220g/ml
cod. 04



**FASCIA
STANDARD**
500g/ml
cod. 05



**FASCIA INTERMEDIA
ATTACCO RULLO**
250g/ml
cod. 06



**FASCIA PRE
TERMINALE**
352g/ml
cod. 07

TAPPI STOPPERS



**TAPPO
PICCOLO**



**TAPPO
TERMINALE DX-SX**

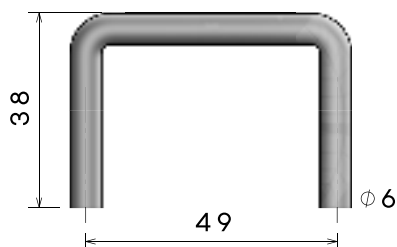


**TAPPO
GRANDE**

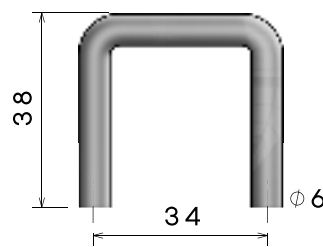


**TAPPO MEZZA
FASCIA**

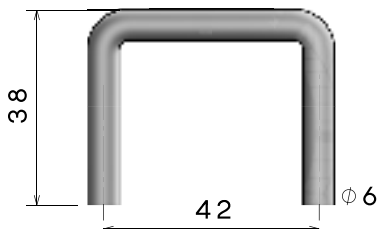
GANCI HOOKS



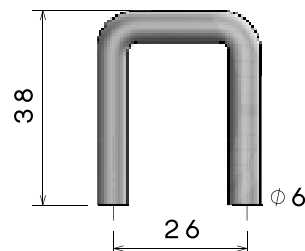
GANCIO 3cm
acciaio / inox



GANCIO 1cm
acciaio / inox



GANCIO 2cm
acciaio / inox



GANCIO 0,5cm
acciaio / inox

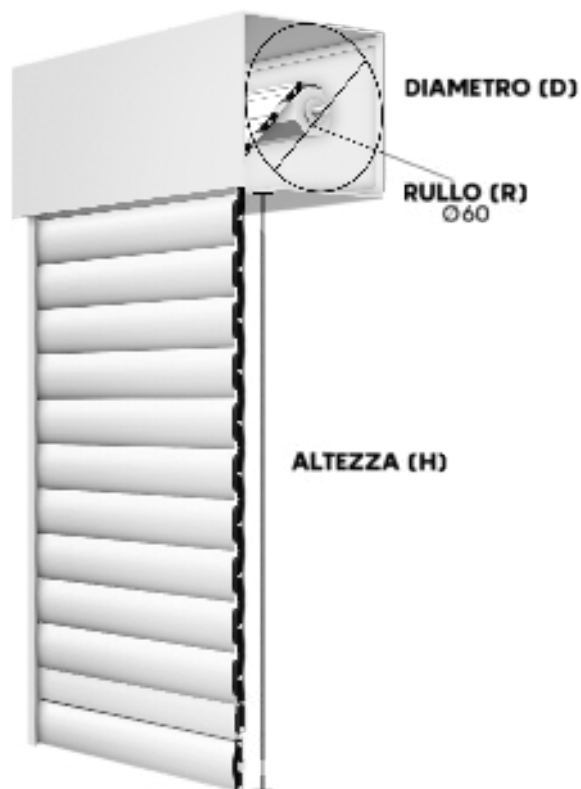
CHIUSURE LOCKERS



**CHIUSURA
INTERMEDIA**

**SERRATURA
PER TERMINALE**





altezza	diametro
120	17,5
140	18,7
160	19,3
180	20,5
200	21
220	22,5
240	23,5
260	24,4
280	25,7
300	27

Peso al m² completa
Complete weight m²

9 kg

Peso fascia per mt lineare
Weight for linear meter

Guarda pagina profili
Look at profile page

Misure massime consigliate certificate
Maximum measures certificated

350cm larghezza/width
350cm altezza/height

Tipo guida per scorrimento
Guides rails for right working

Qualsiasi guida con spessore min 18 mm
Every guide rail with internal size 18 mm